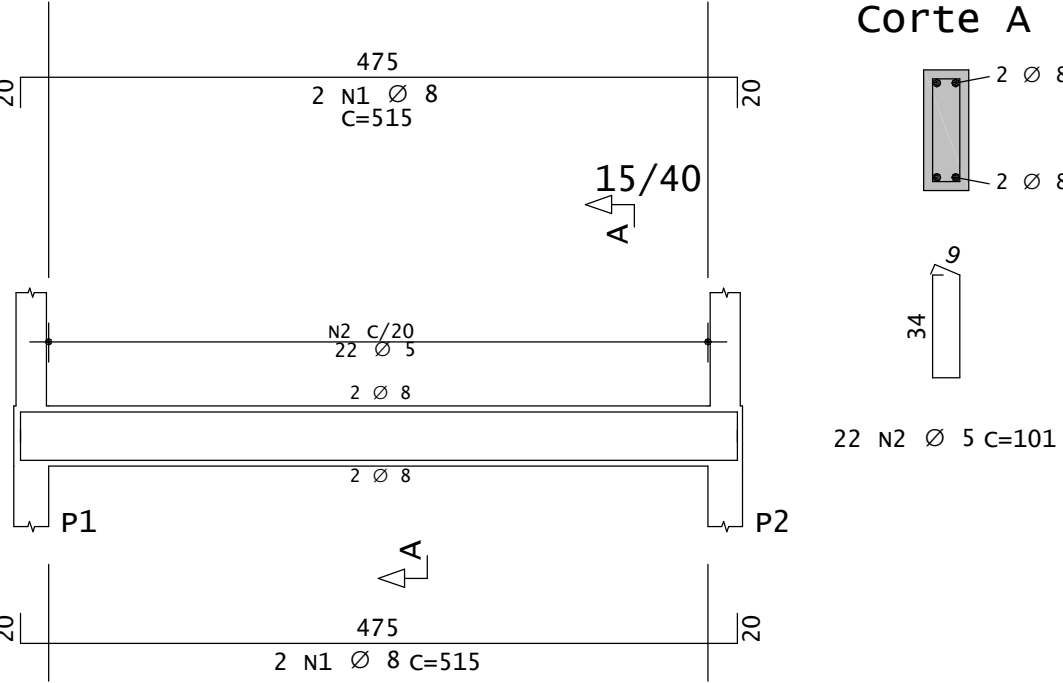
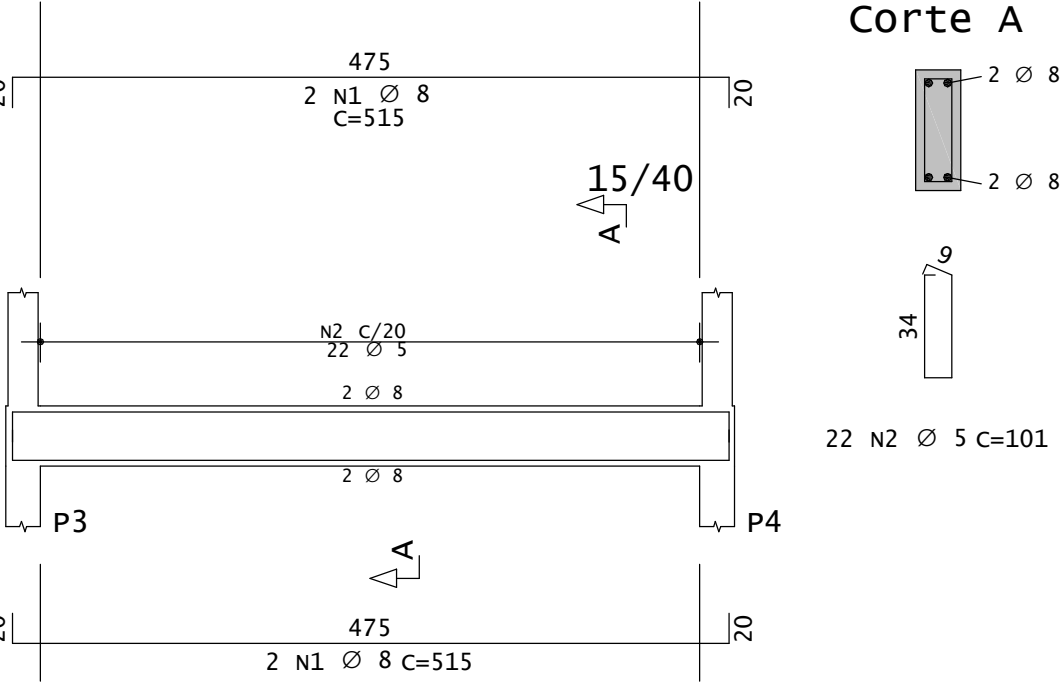


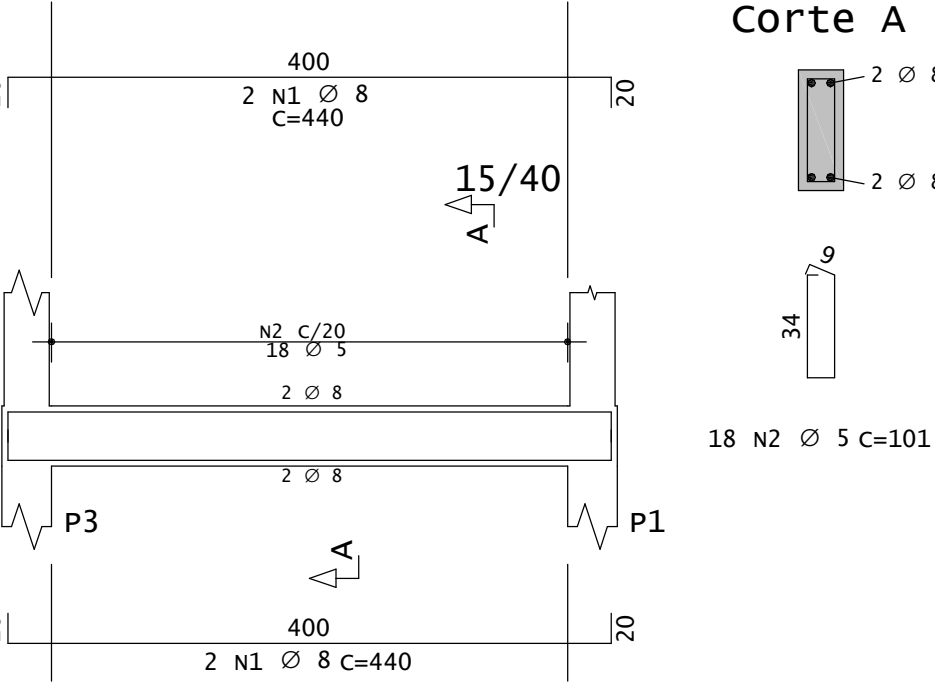
C1



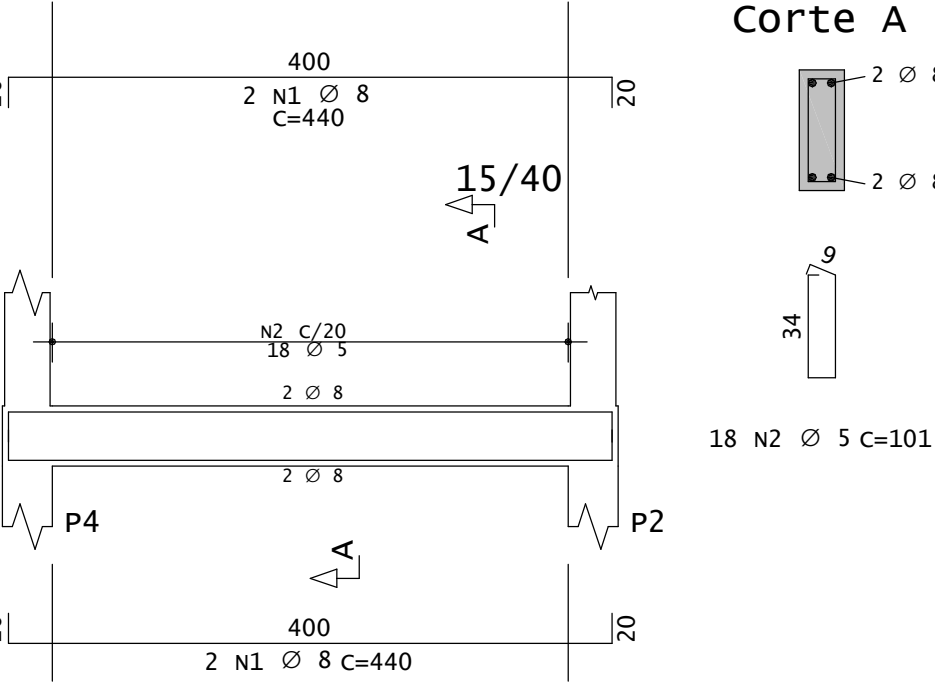
C2



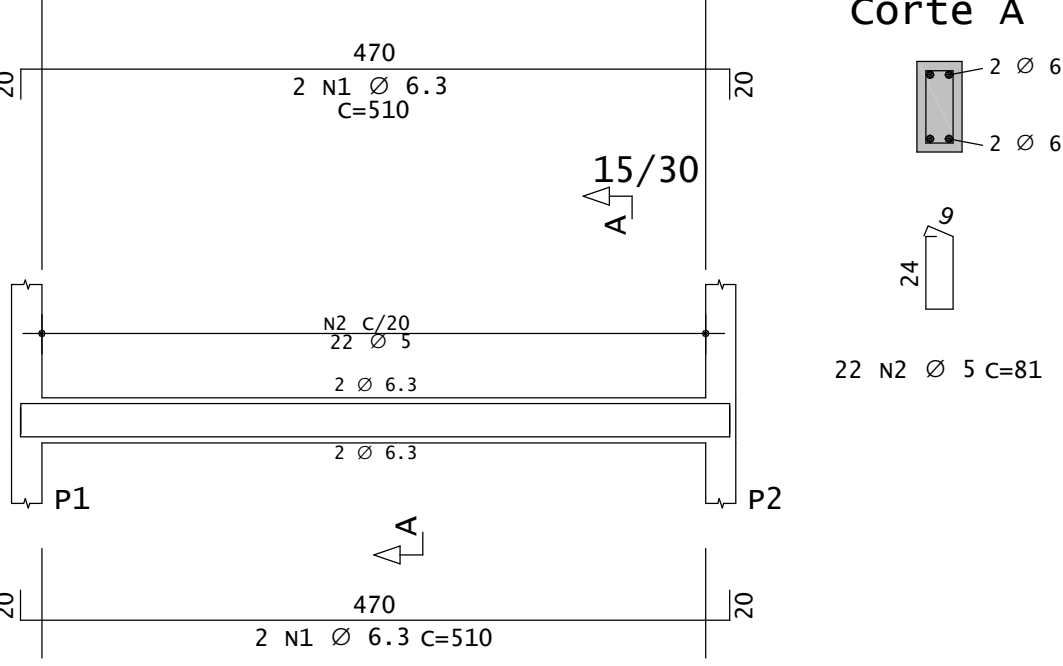
C3



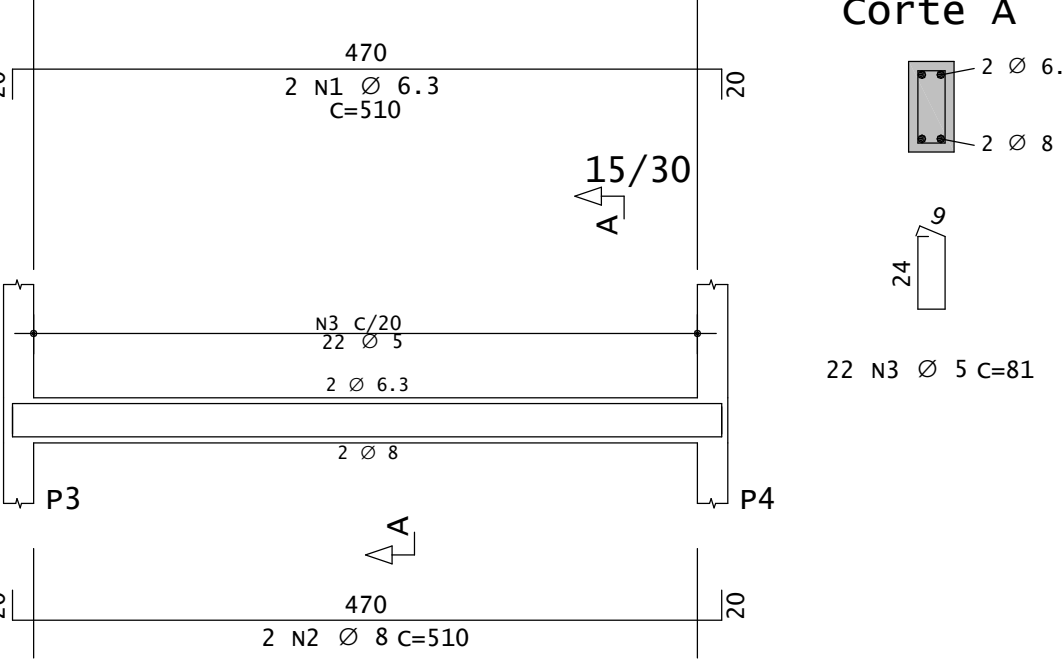
C4



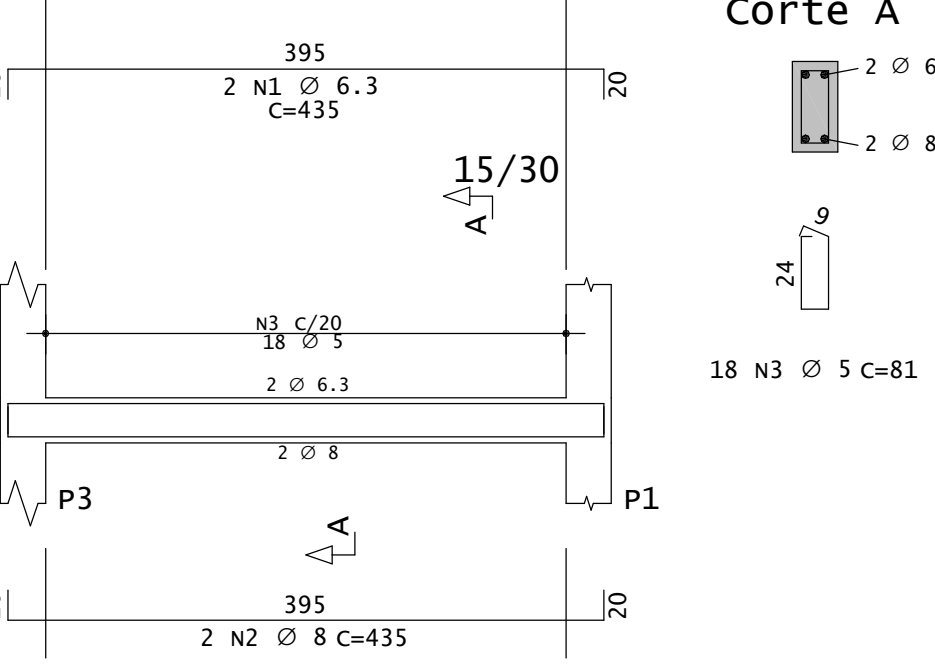
V1



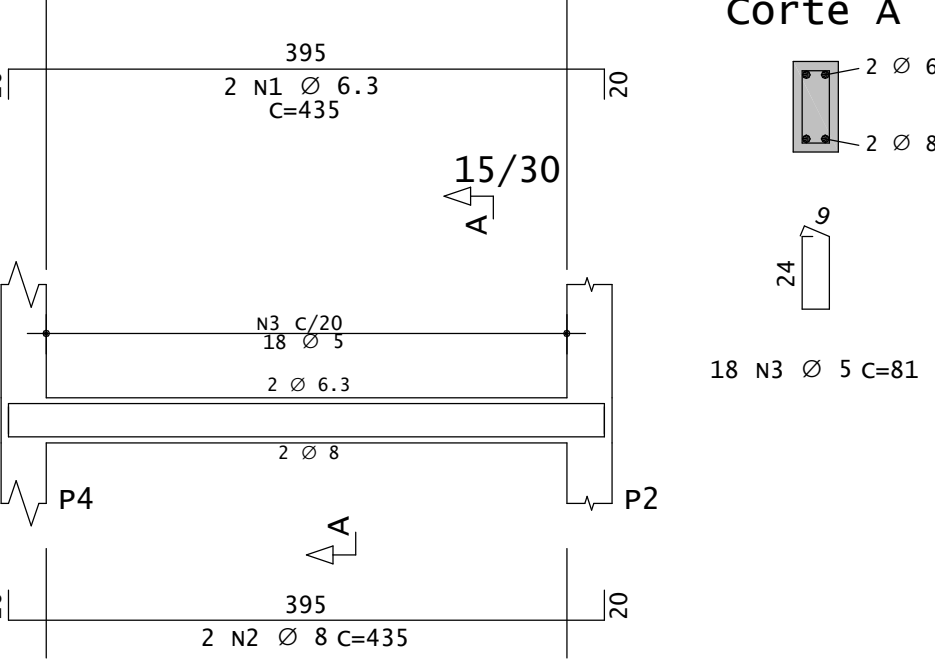
V2



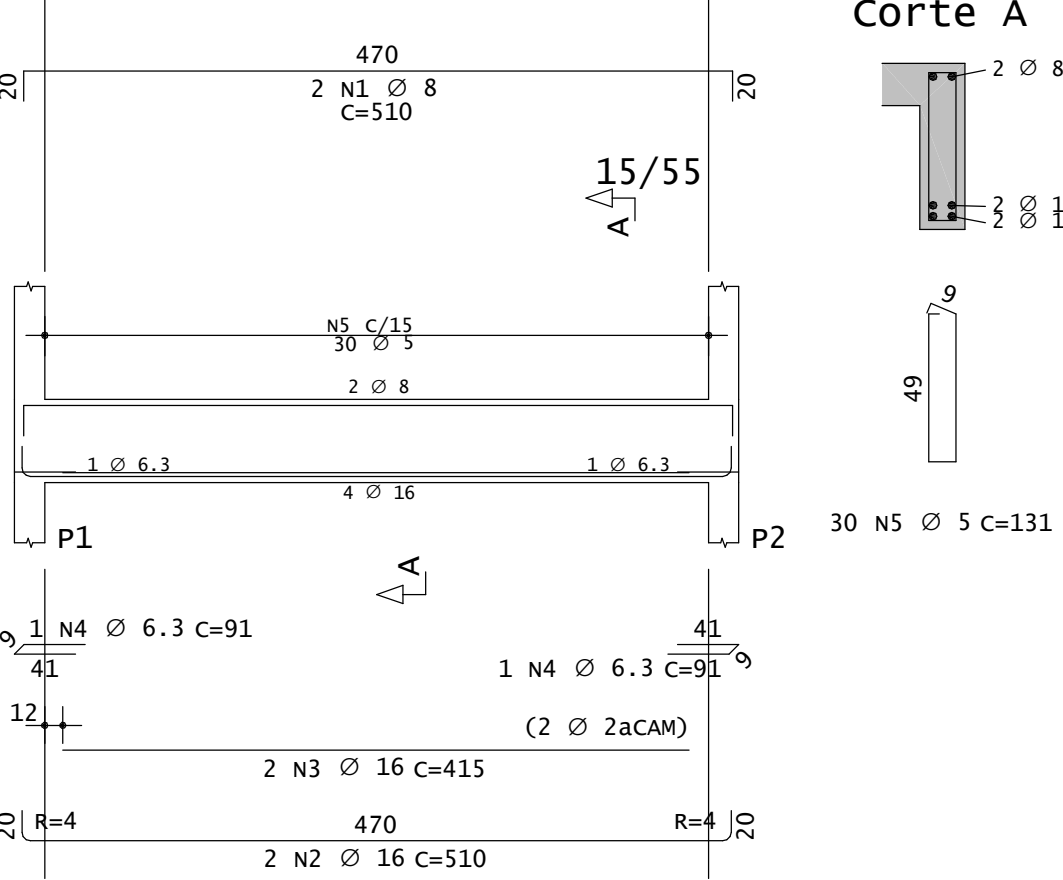
V3



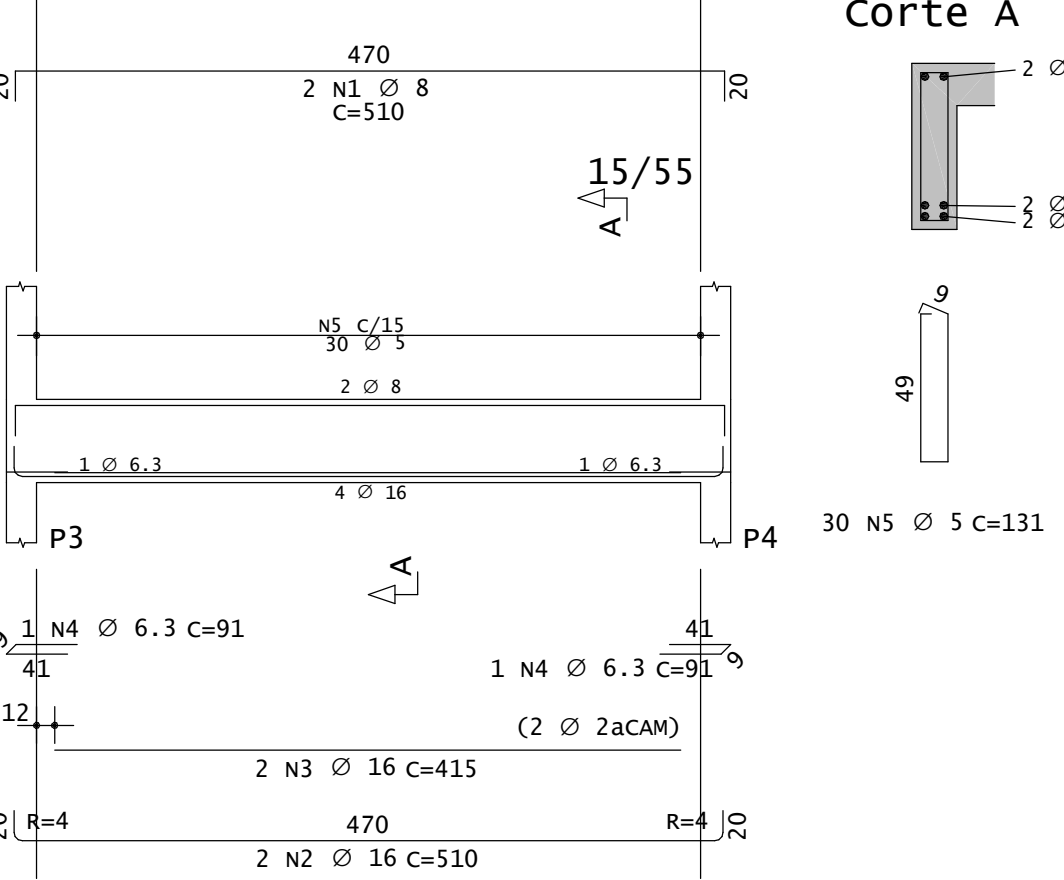
V4



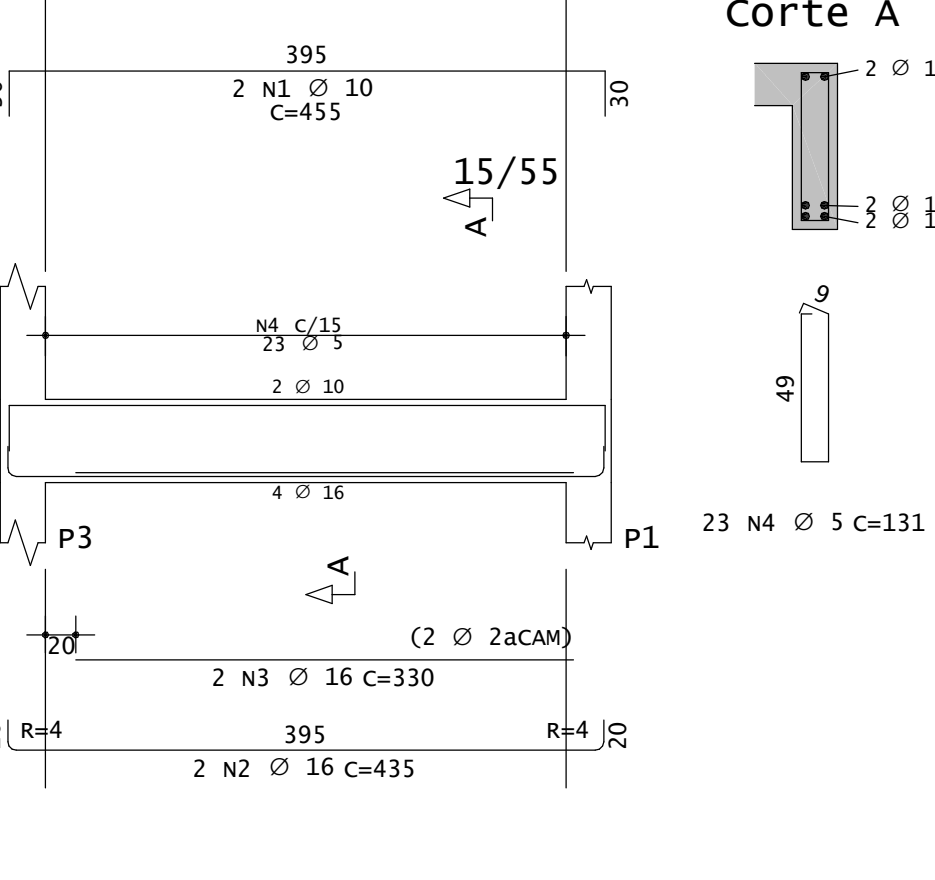
V101



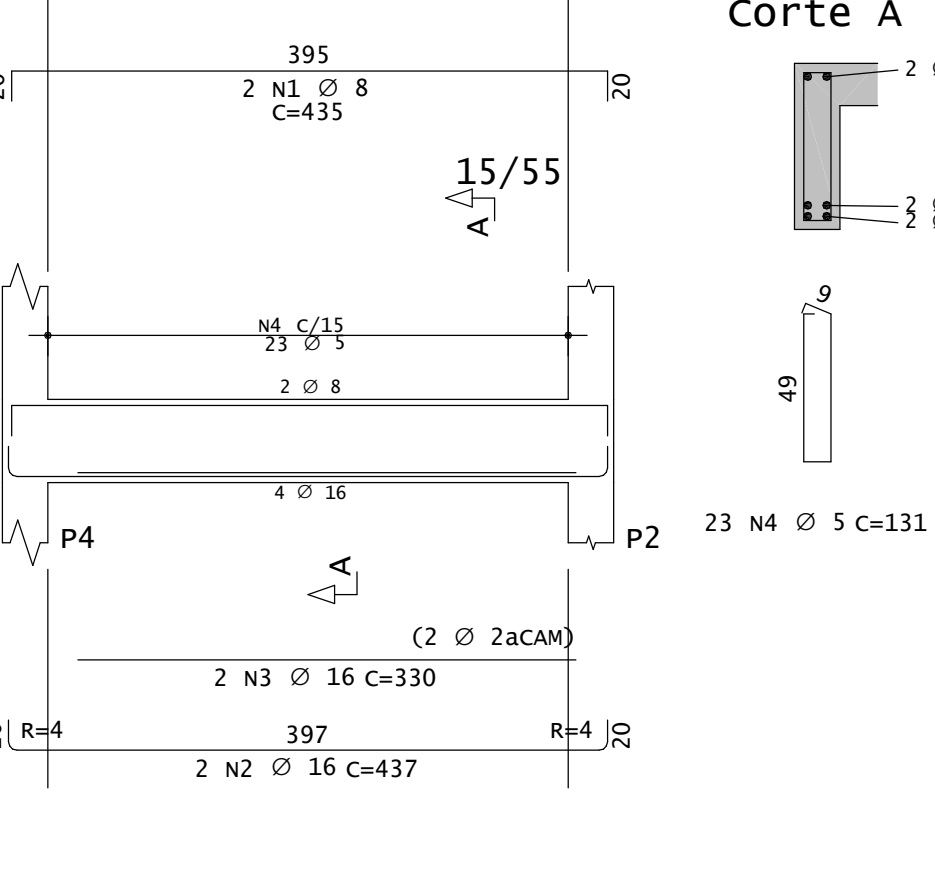
V102



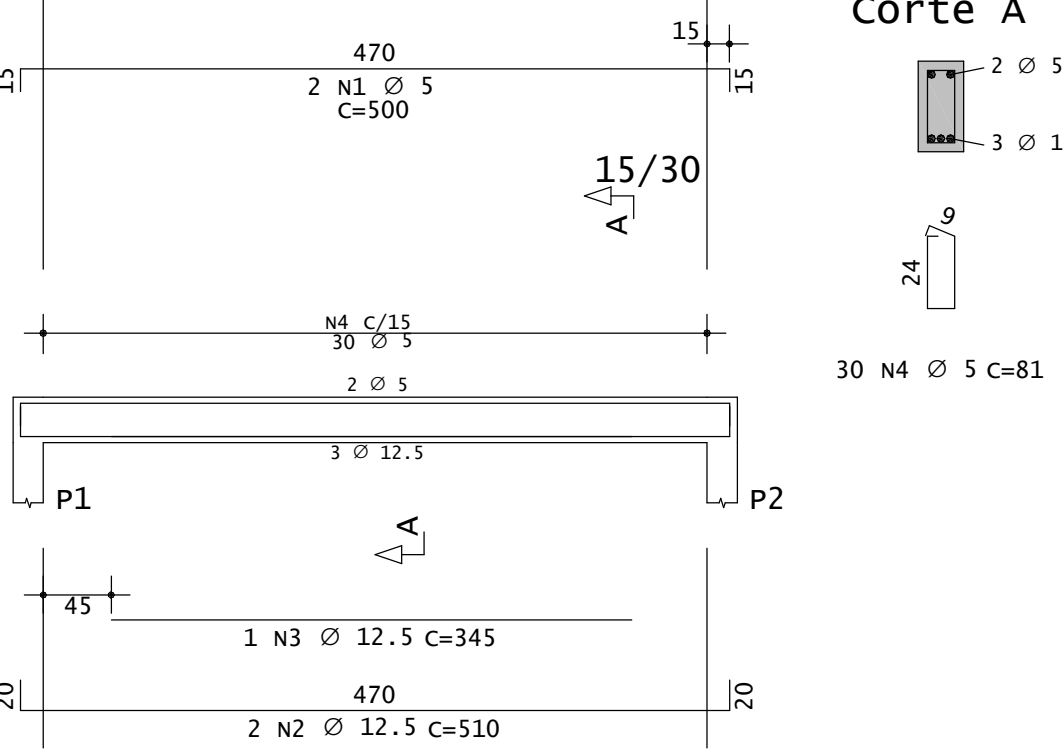
V103



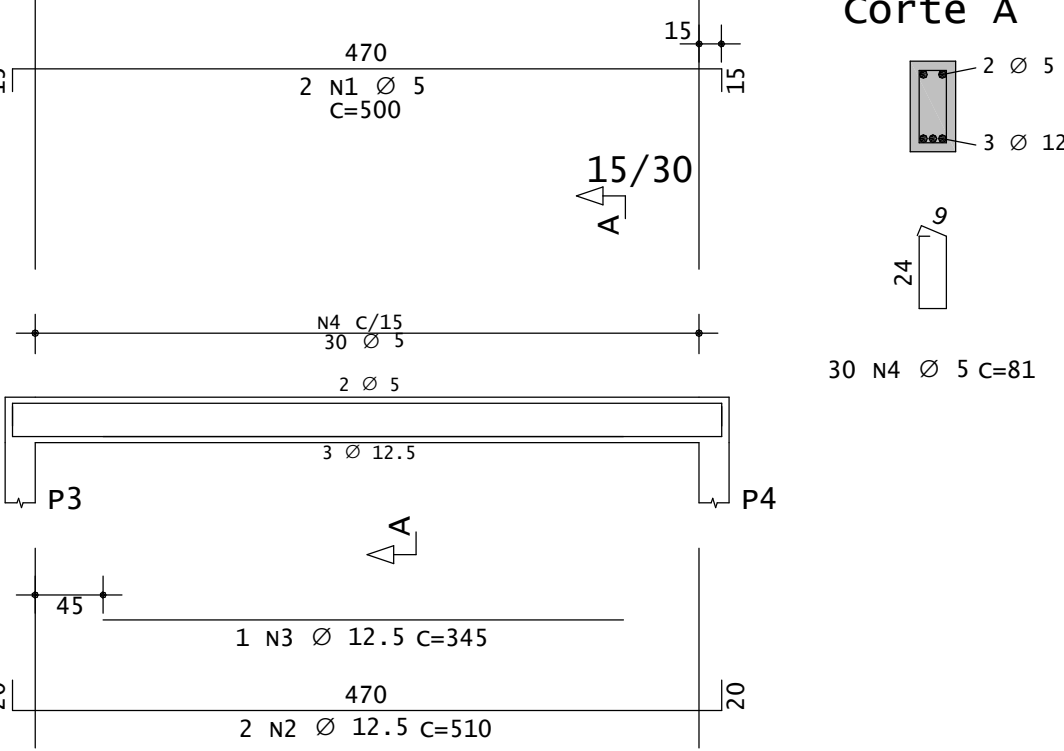
V104



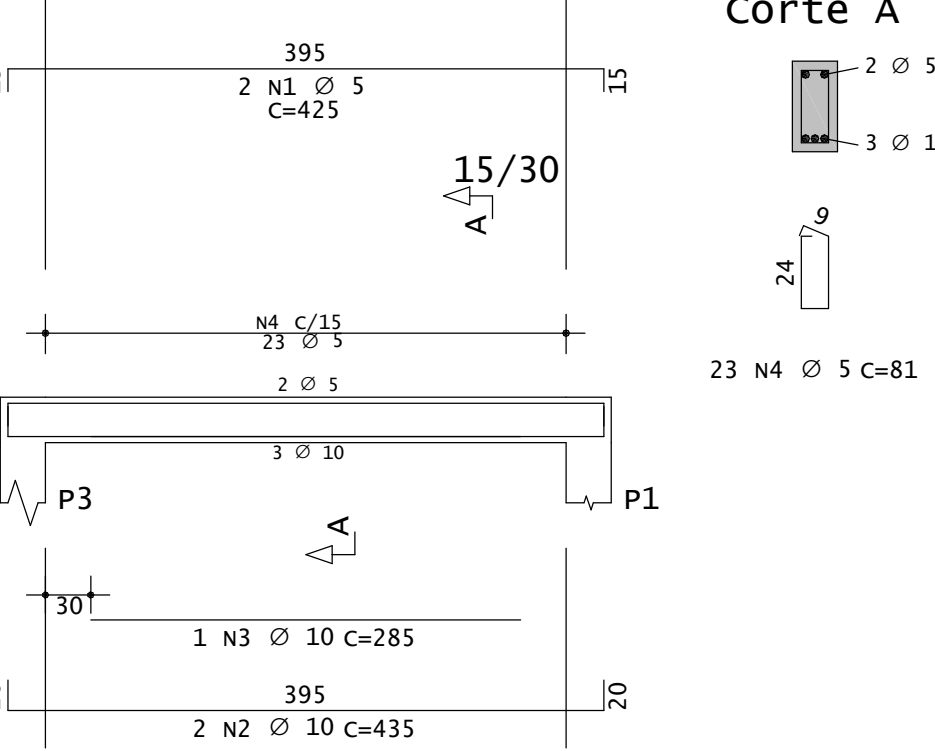
V201



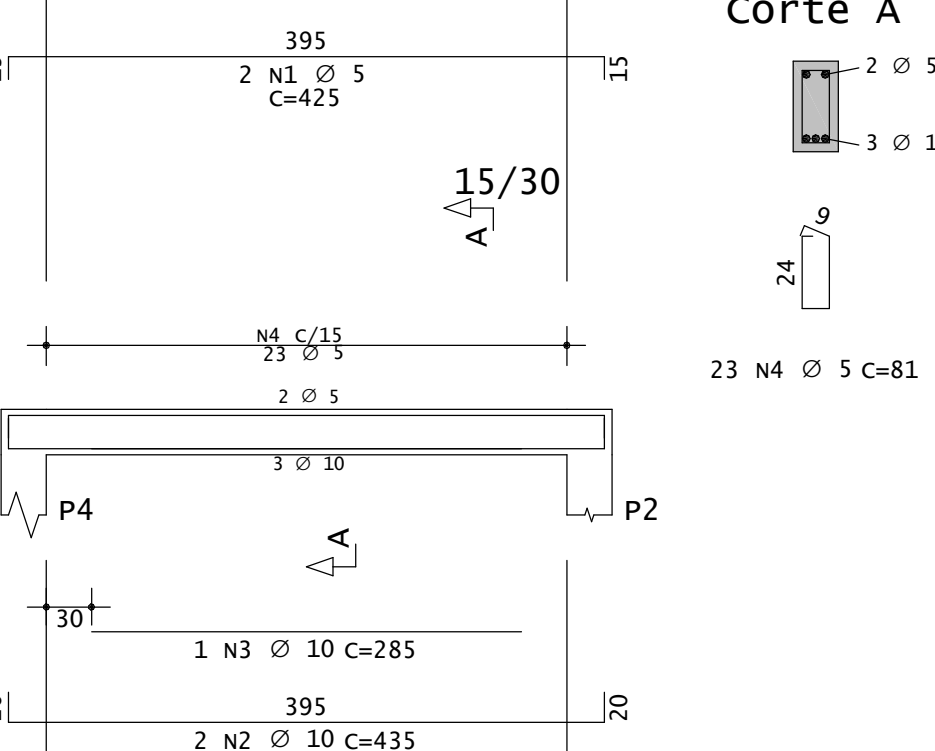
V202



V203



V204



	AÇO	POS	BIT mm	QUANT	COMPRIMENTO	
					UNIT cm	TOTAL cm
C1	50A 60A	1 2	8 5	4 22	515 101	2060 2222
C2	50A 60A	1 2	8 5	4 22	515 101	2060 2222
C3	50A 60A	1 2	8 5	4 18	440 101	1760 1818
C4	50A 60A	1 2	8 5	4 18	440 101	1760 1818
V1	50A 60A	1 2	6.3 5	2 22	510 81	2040 1782
V2	50A 60A	1 2 3	6.3 8 5	2 2 22	510 510 81	1020 1020 1782
V3	50A 60A	1 2 3	6.3 8 5	2 2 18	435 435 81	870 870 1458
V4	50A 60A	1 2 3	6.3 8 5	2 2 18	435 435 81	870 870 1458
V101	50A 60A	1 2 3 4 5	8 16 16 6.3 5	2 2 2 2 30	510 510 415 91 131	1020 1020 830 182 3930
V102	50A 60A	1 2 3 4 5	8 16 16 6.3 5	2 2 2 2 30	510 510 415 91 131	1020 1020 830 182 3930
V103	50A 60A	1 2 3 4	10 16 16 5	2 2 2 23	455 435 330 131	910 870 660 3013
V104	50A 60A	1 2 3 4	8 16 16 5	2 2 2 23	435 437 330 131	870 874 660 3013
V201	60A 50A 60A	1 2 3 4	5 12.5 12.5 5	2 2 1 30	500 510 345 81	1000 1020 345 2430
V202	60A 50A 60A	1 2 3 4	5 12.5 12.5 5	2 2 1 30	500 510 345 81	1000 1020 345 2430
V203	60A 50A 60A	1 2 3 4	5 10 10 5	2 2 1 23	425 435 285 81	850 870 285 1863
V204	60A 50A 60A	1 2 3 4	5 10 10 5	2 2 1 23	425 435 285 81	850 870 285 1863

RESUMO DE AÇO			
AÇO	BIT mm	COMPR m	PESO kg
60A	5	407	63
50A	6.3	52	13
50A	8	133	53
50A	10	32	20
50A	12.5	27	26
50A	16	68	107
Peso Total	60A =		63 kg
Peso Total	50A =		218 kg

NOTAS:

- 1 - MEDIDAS EM CENTÍMETROS, EXCETO ONDE INDICADO.
- 2 - CONCRETO ARMADO, fck ≥ 25 MPa.
- 3 - COBRIMENTO DAS ARMADURAS: C = 3 cm
- 4 - CONFERIR MEDIDAS NO LOCAL E COM A ARQUITETURA.